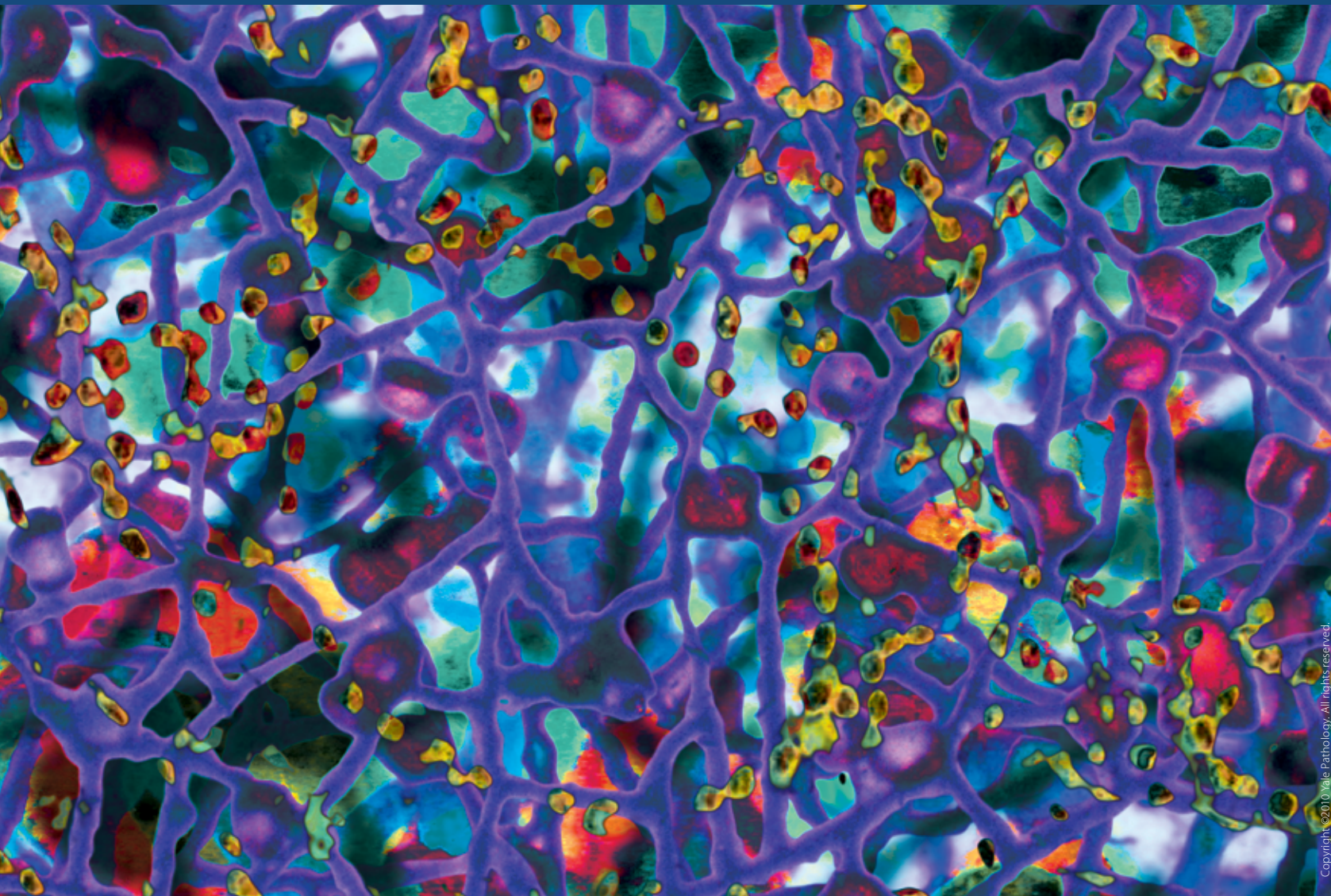


Endocrine, Head & Neck Pathology



The Endocrine, Head and Neck Pathology Program supports the Yale–New Haven Hospital endocrine referral center, one of the largest in the nation for the treatment of thyroid and parathyroid diseases. The Head and Neck Oncology service is a tertiary referral center in Connecticut and treats complex and rare cancer cases. The senior lead pathologist on the team has more than 10 years experience in this area, and is readily accessible for second opinions and consultations. Our immunohistochemistry laboratory is well equipped for extensive work-up of undifferentiated tumors. Cytopathologists have extensive experience in Fine Needle Aspiration of thyroid and other head and neck nodules.



Manju Prasad, M.D.
Associate Professor of Pathology
Director, Endocrine, Head and Neck Pathology
Director, Immunohistochemistry Laboratory

Adebowale Adeniran, M.D.
Assistant Professor of Pathology

David Chieng, M.D.
Professor of Pathology
Director, Cytology

Diane Kowalski, M.D.
Associate Professor of Pathology and Surgery (Otolaryngology)

Constantine Theoharis, M.D.
Assistant Professor of Pathology

Copyright ©2010 Yale Pathology. All rights reserved.

